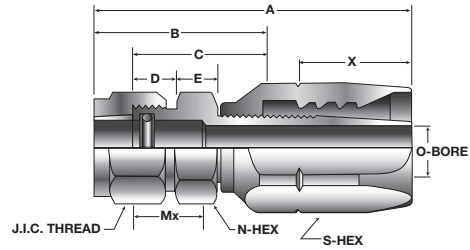
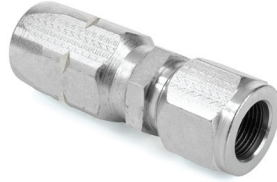




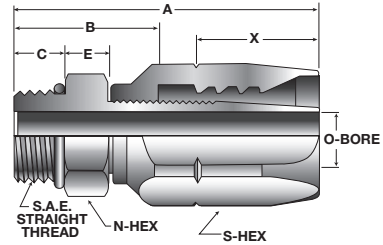
**LT**  
**156 "O-RING SEAL"**  
**SKIVE/ZINC PLATED STEEL**



100R1A PART NO.	HOSE SIZE	O. D. TUBE SIZE	FITTINGS COMP. NIPPLE	PARTS SOCKET	EA. WEIGHT	A	B	C	D	E	H NUT HEX	MX	NIPPLE N HEX	O	SOCKET S HEX	X
156-4-5	4	1/4	4156-4-4	4015-4	0.18	2.30	1.33	1.02	0.41	0.23	5/8	0.50	9/16	0.19	3/4	0.81
156-6-6	6	3/8	4156-6-6	4015-6	0.26	2.52	1.45	1.14	0.41	0.27	3/4	0.59	11/16	0.28	7/8	0.88
154-8-6	6	1/2	4156-8-6	4015-6	0.29	2.78	1.72	1.25	0.53	0.31	1	0.63	7/8	0.28	7/8	0.88
156-8-8	8	1/2	4156-8-8	4015-8	0.49	2.95	1.72	1.28	0.53	0.31	1	0.69	7/8	0.38	1 1/32	1.03
156-10-8	12	5/8	4156-10-8	4015-8	0.54	3.14	1.91	1.38	0.59	0.34	1 1/8	0.75	1	0.38	1 1/32	1.03
156-12-12	16	3/4	4156-12-12	4015-12	0.80	3.47	2.00	1.47	0.69	0.38	1 1/4	0.75	1 1/8	0.63	1 1/4	1.25
156-16-16	20	1	4156-16-16	4015-16	1.27	3.94	2.15	1.63	0.75	0.41	1 5/8	0.88	1 1/2	0.88	1 3/8	1.38

For Hose Information See Page 12f

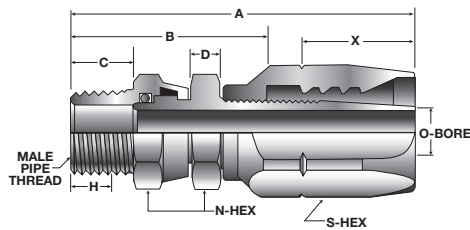
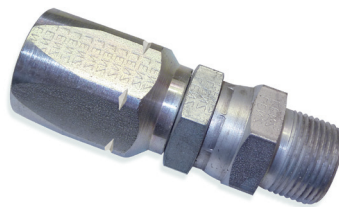
**ST**  
**158 MALE S.A.E. O-RING**  
**SKIVE/ZINC PLATED STEEL**



100R1A PART NO.	HOSE SIZE	O. D. TUBE SIZE	SAE MALE THREAD	FITTING COMP. NIPPLE	PARTS SOCKET	EA. WEIGHT	A	B	C	D	NIPPLE N HEX	O	SOCKET S HEX	X
158-4-4	4	1/4	7/16-20	4158-4-4	4015-4	0.14	1.64	0.98	0.36	0.25	9/16	0.19	3/4	0.81
158-6-6	5	3/8	9/16-18	4158-6-6	4015-6	0.21	2.09	1.09	0.39	0.30	11/16	0.28	7/8	0.88
158-8-6	6	1/2	3/4-16	4158-8-6	4015-6	0.24	2.25	1.19	0.44	0.03	7/8	0.28	7/8	0.88
158-8-8	8	1/2	3/4-16	4158-8-8	4011-8	0.36	2.45	1.22	0.44	0.34	7/8	0.38	1 1/16	1.03
158-10-8	10	5/8	7/8-14	4158-10-8	4015-8	0.40	2.55	1.31	0.50	0.38	1	0.38	1 1/16	1.03
158-12-12	12	3/4	1 1/16-12	4158-12-12	4015-12	0.63	2.88	1.41	0.59	0.41	1 1/4	0.63	1 3/8	1.25
158-16-16	16	1	1 5/16-12	4158-16-16	4015-16	1.06	3.03	1.47	0.59	0.41	1 1/2	0.88	1 3/4	1.38

For Hose Information See Page 12f

**UP**  
**159 UNION MALE**  
**SKIVE/ZINC PLATED STEEL**



100R1A PART NO.	HOSE SIZE	O. D. TUBE SIZE	MALE PIPE THREAD	FITTINGS COMP. NIPPLE	PARTS SOCKET	EA. WEIGHT	A	B	C	D	*H	NIPPLE N HEX	O	S HEX	X
159-4-4	4	1/4	1/4	4159-4-4	4015-4	0.19	2.69	3.84	0.61	0.20	0.38	5/8	0.19	3/4	0.87
159-6-6	6	3/8	3/8	4159-6-6	4015-6	0.32	3.00	1.94	0.61	0.27	0.41	13/16	0.28	7/8	0.88
159-8-8	8	1/2	1/2	4159-8-8	4015-8	0.5	3.61	2.38	0.78	0.31	0.53	1	0.38	1 1/16	1.03
159-12-12	12	3/4	3/4	4159-12-12	4015-12	0.84	3.84	2.38	0.80	0.36	0.56	1 1/4	0.63	1 3/8	1.25
159-16-16	16	1	1	4159-16-16	4015-16	1.35	4.47	2.78	0.98	0.38	0.66	1 1/2	0.88	1 3/4	1.38

For Hose Information See Page 12f

\*H Hand Engagement Plus One Full Thread